

Features

Features

Target Platforms

gvSIG Mini is an application with two platform running environments:

Android phones

[Android](#) is an operating system for mobile devices such as phones, notebooks, etc., initially developed by Google and later by the [Open Handset Alliance](#).

You can download [gvSIG Mini for Android](#) version.

gvSIG Mini has two distributions for different Android operative systems versions:

Android version	1.5	1.6	2.0	2.1	2.2
gvSIG Mini		✓	✓	✓	✓
gvSIG Mini for 1.5	✓	✓ *	✓ *	✓ *	✓ *

*Low UI Resolution

Java phones.

Java compatible phones are those which support Java ME CLDC specifications (generally known as Java compatible phones). See your phone specifications to check if your phone supports [Java Micro Edition \(ME\)](#) CLDC 1.1 / MIDP 2.0. You can download [gvSIG Mini for Java](#) version.

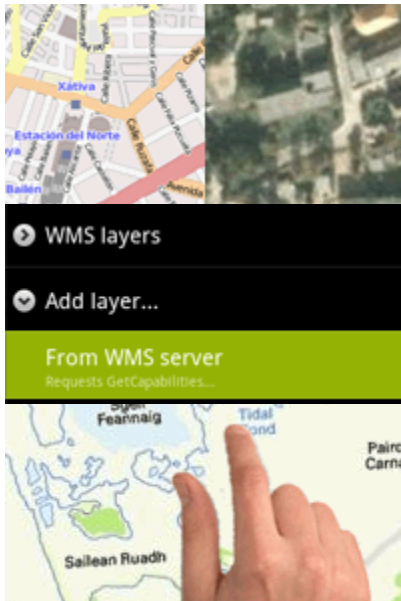
Features

gvSIG Mini offers a full set of features for browsing around:

Multiple Layers

WMS & WMS-C

Multitouch



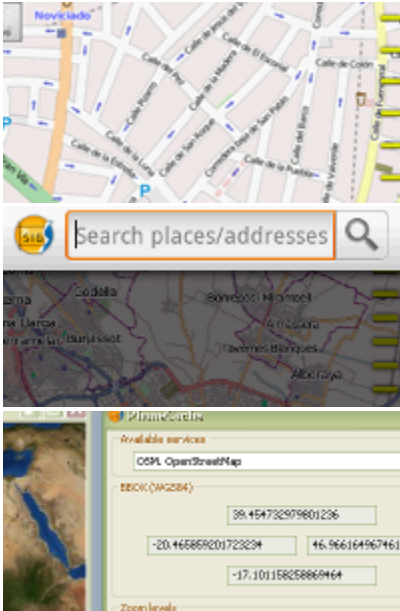
Multiple Map Layers (satellite images and standard maps).

Support for OGC's WMS and WMS-C layers

Multitouch support on Android 2+

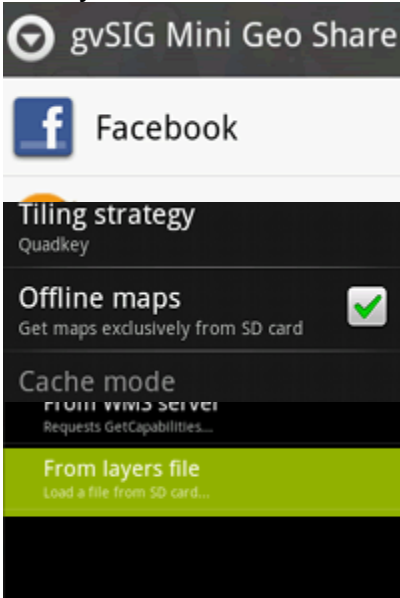
Quickzoom

**Android search
PhoneCache**



QuickZoom: SlideBar or DoubleTap
Android search button support
Desktop tileset generator. [Phone Cache](#) is a
tile generator for gvSIG Mini

**Share
Off-line mode
New layers**

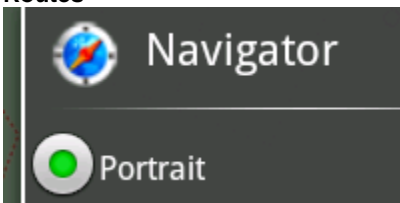


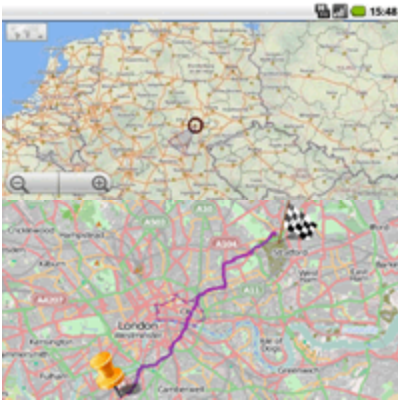
Share your location: Twitter, SMS, Email,
Facebook...

Low bandwidth usage and offline usage
Search for new layers configuration

**Compass & navigation
Different screens**

Routes





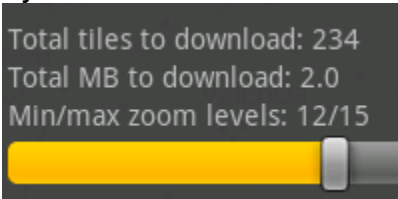
Compass support and 2D Navigation Mode
Compatible with Low and High Screen
Resolutions. Portrait and Landscape
orientation.

Route finder between points

Map downloads

Searches

My Location



Map Tiles downloader from the phone for
offline mode

Address and Points Of Interest search
GPS, Cell and WiFi GeoLocation positioning

Street View



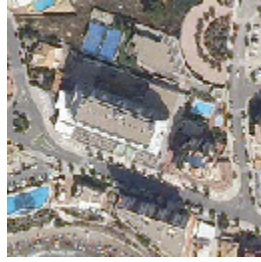
Street View integration

- Free to use (GNU/GPL)

Layers list

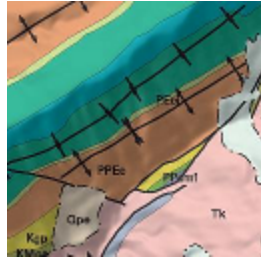
gvSIG Mini comes with a set of layers pre-configured out of the box, which can be expanded with new layers. Existing layers are

OpenStreetMap (Mapnik)



**PNOA
(Spain)**

**ICC
Topo
(Spain-
Cat)**



**ICC
Geolog
y
(Spain-
Cat)**

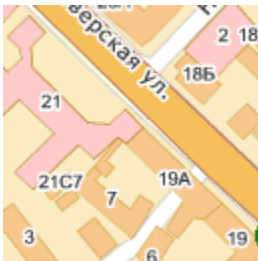


**CycleMap
OSM**



**Cloudm
ade
(Fresh)**

**Yandex
Maps
(Russia)**



**OpenStr
eetMap
(Osmar
ender)**

**Cartoci
udad**



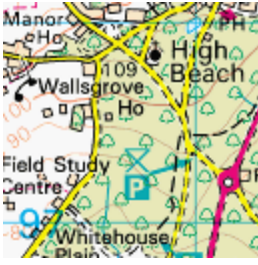
(Spain)

**ICC
Orto
(Spain-
Cat)**



**Ordnan
ce**

Survey (UK)



Cloudmade

Cloudmade (FineLine)



FreeMap (Slovakia)

If you know a useful free map service that could be added to gvSIG Mini, please tell us at gvsigmini@prodevelop.es.