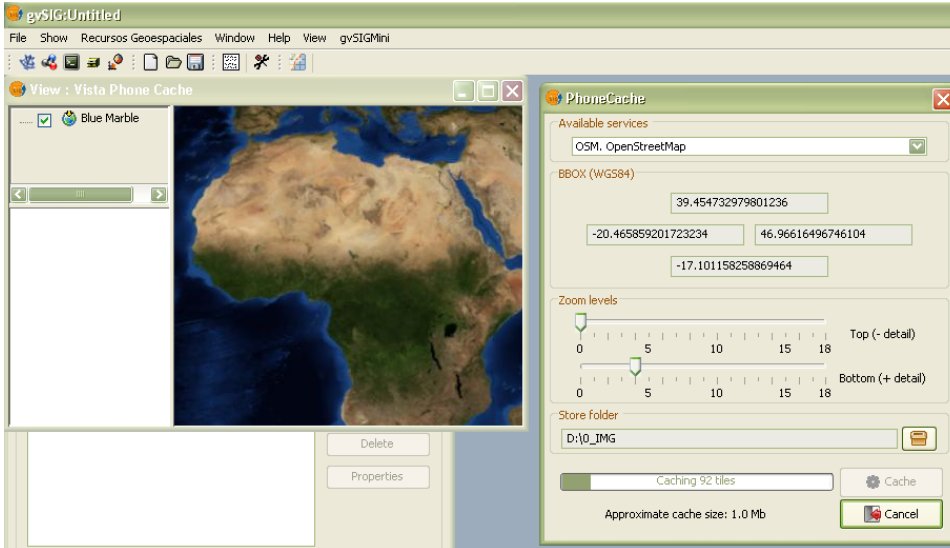


Phone Cache Documentation

Phone Cache user manual.

This new extension adds gvSIG toolbar a new icon and a new menu named gvSIGMini. You can begin the caching setup process from this place. When you push PhoneCache icon, gvSIG shows a new gvSIG view with a WMS layer "Blue Marble" and a simple panel that it allows:

- Select one web map service from the list
- Define a download region through the longitude and latitude, minimum and maximum. To define the place parameters, you must surf to view with Blue Marble WMS layer, until you see the region that you want to store.
- Define the zoom levels. The zoom level 0 has a small scale factor, cartography has little detail, while zoom levels near 18 represent a big scale factor, cartography has many details.
- Select the disc folder where to store the images cache (the tiles).



Once you have defined the cartography download parameters, you must push "Cache" button for launching the process.



Cuidado

Áreas de descarga grandes o niveles altos de zoom pueden implicar un enorme tamaño de información a descargar. Chequee el tamaño orientativo de la caché de imágenes que se le indicará, antes de proceder a la descarga.

You must copy the images cache to your mobile phone's inner memory or to your phone's storage memory card. Always select the folder defined in gvSIGMini. This way, gvSIGMini can run in isolation, with no Internet connection.

Check the [gvSIG Mini for Java user manual](#) for detailed information about configuring stored maps.

If you are using an Android, you have to copy the folder generated by Phone Cache, to /sdcard/gvSIG/maps